

# ROOF MASTER

Lightweight and fully adjustable body safety harness. Most suitable for work on inclined areas and roofs. The unique Singing Rock MOTION SYSTEM gives the user freedom of movement without being restricted by working rope or fall arrest system. An ideal solution for working at heights where the precise positioning and free movement are important.

## DESCRIPTION

the front fall arrest point EN 361 (the red light-alloy D-ring) is placed lower than usual and allow use of this attachment point as well for positioning without any limitation of comfort

the harness can be easily supplemented with the CAM CLEAN chest ascender

textile loops for work positioning according to EN 358 – designed in a way that prevents accidental capture during a work

multi gear loops with many connect points, when using the connectors, it is possible to add tool bag and additional materials

the pocket for small items



during the fall arrest to the back red textile attachment point EN 361, the MOTION SYSTEM efficiently splits the energy of the fall to the body

light weight shoulder part increases work comfort

buckle Easy-Lock enables simplify handling (all steel componets are coated by cataphoresis, so-called E-coating)

the black light-alloy O-ring part of the MOTION SYSTEM according to EN 813

speed buckle enables simplify and quickly dressing with maximal comfort

elastic webbing connecting the leg loops and O-ring on the waist belt

double buckles for comfortable adjustable the leg loops

## KEY PROPERTIES

- new and unique Singing Rock MOTION SYSTEM
- textile loop for positioning according to EN 358
- textile back attachment point EN 361
- maximum movement point EN 813
- light weight
- a new multi gear loops for attaching the tool bag and other gear
- light and comfortable leg loops

## STANDARDS

CE 1019  
 EN 361:2002  
 EN 813:2008  
 EN 358:1999

## USAGE



-30 – +50 °C

## FEATURES



ROOF Master M/L  
 1 570 g / 55.4 oz



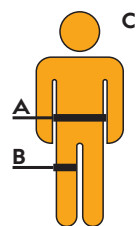
3 YEARS guarantee

## MATERIAL COMPOSITION



- 50 % PES
- 34 % stainless steel
- 10 % PAD
- 6 % polyethylene

## SIZE CHART

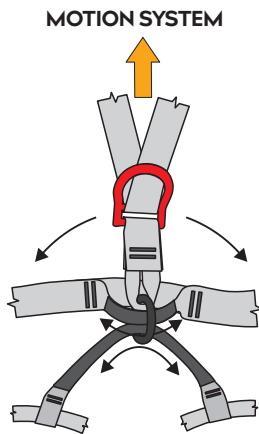
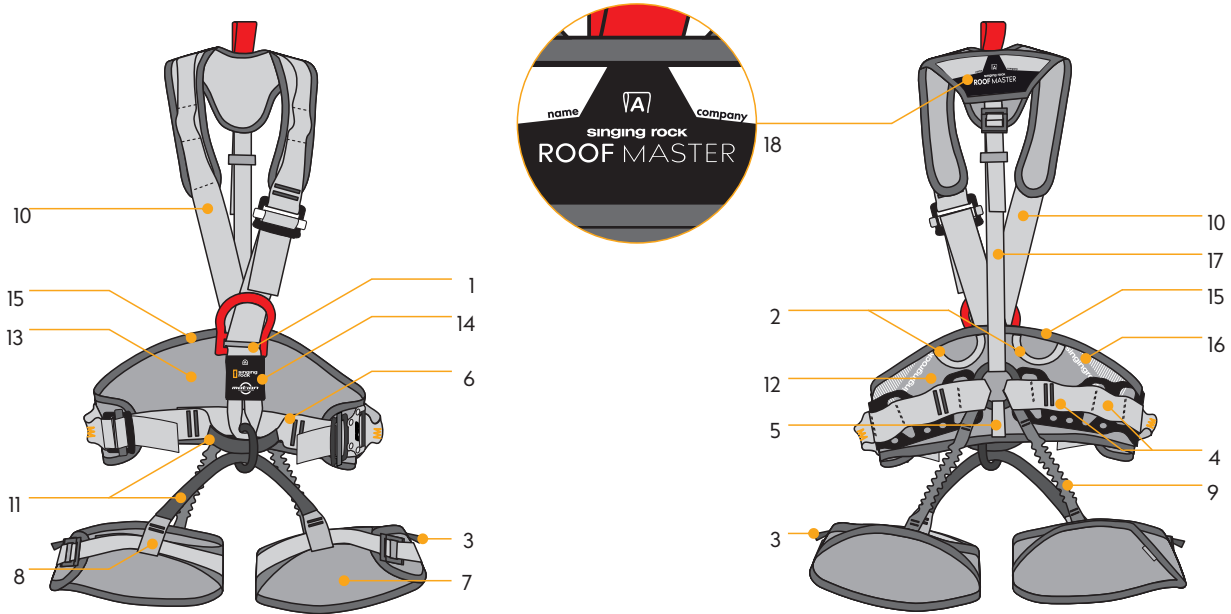


	M/L	XL
A [cm/in]	85-100 / 33-39	90-130 / 35-51
B [cm/in]	50-75 / 20-29	50-75 / 19-29
C [cm]	160-180	175-205

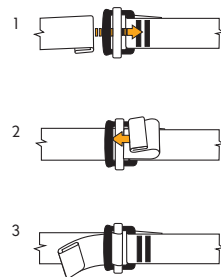
A – waist circumference; B – a circuit leg loops; C – body height

**TECHNICAL DATA**

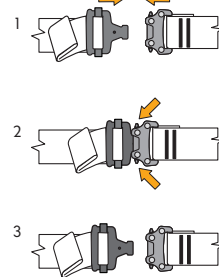
- 1 The loops to fix a webbing with a buckle for easy chest ascender fixation.
- 2 At back size belt two braided gear loops with a bearing capacity of 5 kg.
- 3 Additional loops with a bearing capacity of 5 kg offer additional space for the gear and better gear orientation.
- 4 Slots on the waist belt designed for a secure connection of expensive equipment (such as power saw, drilling machine), with a bearing capacity 1 kN.
- 5 Material loop for a secure connection of expensive equipment (such as power saw, drilling machine), with a bearing capacity 1 kN.
- 6-10 Strength webbing (6 – waist belt, 7 – leg loops, 8 – connecting strap, 9 – back elastic webbing, 10 – shoulder webbing).
- 11 Moving straps of the MOTION SYSTEM are covered with strong polyester fabric to increase the abrasion resistance.
- 12 Wide anatomic waist belt perfectly fits to user's body, high rigidity with sufficient padding provides comfort in work at height and positioning.
- 13 Inner soft foam padding for additional comfort.
- 14 Place for the identification and methodical label.
- 15 Webbing made of polyester with high abrasion resistance.
- 16 The reflective part on the waist belt for higher visibility in dark conditions.
- 17 Rear strap for adjusting shoulder height.
- 18 Name tag at the back shoulder part.



**Easy-Lock buckle**



**SPEED buckle**



**Traceability label**

1	2	3	1 – unique No.
4	001/9999/03/18	ROOF MASTER	2 – batch No.
5	SIZE: S/M/L		3 – month/year of manufacture
6	EN 361:2002 EN 813:2008		4 – model
7	EN 3581999		5 – size
8	CE 1019		6 – standards
9	DATE OK INSPECTOR		7 – conformity marking
			8 – no. of notified body
			9 – inspection label

datamatrix

**MAINTENANCE**

Lifetime of this product depends on the frequency and the environment (salt, sand, moisture, chemicals, etc.) in which is used. Without taking wear or mechanical damage into account and in compliance with the conditions specified in the instructions for use this product may be used 15 years from the date of production and 10 years from the date of the first use.

However mechanical damage can occur during the first use, which can limit the lifetime of this products only to its first use.



beware of salt



beware of UV



beware of chemicals



washing



drying



read instruction

